



GREEN DIAMOND

ILLINOIS CENTRAL HISTORICAL SOCIETY

ISSUE 30-31

\$4.50

DOUBLE ISSUE



Illinois Central Historical Society



ILLINOIS CENTRAL RAILROAD
HISTORICAL SOCIETY

OFFICERS

PRESIDENT
JACK LAUDE
5244 HOWARD ST.
WESTERN SPRINGS IL.60558

FIRST VICE PRESIDENT
NITA FRASER
205 SUNDOWN TRAIL
JACKSON MS. 39212

SECOND VICE PRESIDENT
TERRY MCMAHON
865 GEN. GEO PATTON RD.
NASHVILLE TN. 37221

SECRETARY
DAVID HAYES
P.O. BOX 382
HARDINSBURG KY 40143

TREASURER
RICHARD CHENAULT
4964 A PARKER
ST. LOUIS MO. 63139

DIRECTORS

LEW CONCKLIN
DAVID J. DAISY
TONYA DAISY
DAVE FRASER JR.
JIM KUBAJAK
PHILLIP MARVIN
CHARLES WERNER

GREEN DIAMOND EDITOR

Tom Grant

ASSOCIATE EDITORS

Jim Kubajak

David J. Daisy

ICHS NEWSLETTER EDITOR

John Thomas

This Special Freight Car Issue was prepared jointly by the editors of the GREEN DIAMOND and FREIGHT CARS JOURNAL and will appear as GREEN DIAMOND #30-31 and also as an issue of FREIGHT CARS JOURNAL.

FREIGHT CARS JOURNAL is published by the Society of Freight Car Historians, David G. Casdorff, P.O. Box 2480, Monrovia CA 91017.

ICHS MEMBERSHIP

The GREEN DIAMOND is published by the Illinois Central Railroad Historical Society, an Educational, Nonprofit, Illinois Corporation organized to preserve historical material, and collect data on the former Illinois Central Railroad. Membership in the society is available to anyone interested in the Illinois Central Railroad or it's predecessor lines.

DUES

Regular \$15.00
Sustaining \$20.00

1991 ANNUAL MEETING CHMN.
Dave Fraser Jr.
205 Sundown Trail
Jackson MS 39212

ICHS MEMBERSHIP CHAIRMAN
Jim Kubajak
14818 Clifton Park
Midlothian IL 60445

ICHS NEWSLETTER CHMN.
John Thomas
9918 Torigney Ct.
St. Louis MO 63126

PUBLICATIONS CHAIRMAN
Tom Grant
22539 Arquilla Dr.
Richton Park IL 60471

ICHS SPECIAL RUN CARS
MODEL CHAIRMAN
David Daisy
746 N. Bruns Lane
Springfield IL 62702

ICHS COMPANY STORE
Tonya Daisy
746 N. Bruns Lane
Springfield IL 62702

MODEL CONTEST CHMN.
ICHS MODULE CHAIRMAN
Lew Concklin
P.O. Box 586
Oak Park IL 60301

ICHS LIVING HISTORY
David Hughes
R.R. 2 - Box 6
Palestine IL 62451

ICHS PAXTON DEPOT
Charles Werner
642 S. Park St.
Paxton IL 60957
(217) 379-2261

ON THE COVER

Cotton bales being loaded into IC double door boxcars at Memphis TN. ICRR photo.

ILLINOIS CENTRAL FREIGHT CAR PICTORIAL

by David J. Daisy and Tom Grant



ILLINOIS CENTRAL SYSTEM
IC 17TH 1937
S. F. CO. 407 1660
FIVE NO. 38317-449

IC 166751 BOXCAR 40FT DD. PHOTO BY ACF - ICHS COLLECTION. The 166500 - 166999 series cars built by ACF Chicago in 1937. Renumbered to 35500-35999 in 1938. Cars equipped with auto loading devices. Cars renumbered again in 1941 to 36500 to 36999 series. Auto loading devices removed between 1950 & 1952.



IC 156125 WOOD BOXCAR. PHOTO BY ACF - ICHS COLLECTION. The 156001-156500 series cars were built by ACF in 1925 at their Madison plant in Chicago area. Renumbered by the IC later to 11000 to 11974 series. Assigned to automobile service.



IC 19363 BOXCAR 40FT. PHOTO BY ACF - ICHS COLLECTION. The 19300-19499 series cars built by ACF in 1940.



IC 18862 BOXCAR 40FT. PHOTO BY ACF - ICHS COLLECTION. The 18800-18999 series cars built by ACF in 1939 at St. Louis, MO. Several cars at random were assigned to flour loading at the Pillsbury plant in Springfield, IL.



IC 17902 BOXCAR 40FT. PHOTO BY ACF - ICHS COLLECTION. The 17800-17999 series cars built by ACF in 1938 & 1939 at the St. Louis ACF plant.



IC 20545 BOXCAR 40FT. PHOTO BY W.C. THURMAN - DAVID J. DAISY COLLECTION. The 20000-20999 series cars were built by Pullman Standard - Bessemer plant in 1940. Cars were upgraded by the IC McComb, MS car shop in 1966. This is one of 15 cars equipped with 5 belt DF loading devices for special loading.



IC 28123 BOXCAR 40FT. PHOTO BY BRUCE MEYER. The 28000-28999 series cars were built by G.A.T. in 1940. Several cars in the series were rebuilt by the IC Johnson yard car shop at Memphis, TN in 1966. Several cars were assigned for cotton loading only.



IC 10975 BOXCAR 50FT. PHOTO BY ICRR - ICHS COLLECTION. The 10975-10999 were built by the IC Centralia, IL car shop in 1966. The cars were equipped with 2 $\frac{3}{8}$ " wood floor decking and Evans load dividers.



IC 26055 BOXCAR 50FT. PHOTO BY ICRR - ICHS COLLECTION. The 26000 - 26099 series cars were built by the IC Centralia, IL car shop in 1956. The cars were equipped with 9 belt DF loading devices and 1/4" wood floor decking.



IC 200023 BOXCAR 40FT. PHOTO BY ICRR - ICHS COLLECTION. The 200000-200599 series cars were rebuilt by the IC McComb, MS car shop in 1967 from former 17000-20999 boxcars built between 1938 & 1940. General Service.



IC 44282 HI-CUBE BOXCAR 86FT. PHOTO ICRR - ICHS COLLECTION. The 44282-44285 series cars were built by Thrall in 1967. Equipped with 2 movable bulkheads and 5 belt rail DF-2 load devices. These cars were assigned to auto parts service.



IC 12719 BOXCAR 50FT. PHOTO BY BRUCE MEYER. The 12700-12899 series cars built by G.A.T. Co. in 1968. Cars equipped with SL-2 load dividers and 2 3/8" nailable steel floors.



IC 4371 BOXCAR 40FT. PHOTO BY DAVID HUYCK. The 4000-4899 series cars were built by IC Centralia, IL car shop in 1957 and upgraded by IC. Cars equipped with DF load devices. Most of these were assigned to appliance loading in Herrin, IL and Evansville, IND. A few were assigned to Effingham, IL for air conditioner loading.



IC 41682 BOXCAR 50FT. PHOTO BY ICRR - DAVID J. DAISY COLLECTION. The 41600-41799 series cars were built by the IC Centralia, IL car shop in 1959. Equipped with DF load devices.



IC 65120. HOPPER. 65000-67999. ICRR 1964. 70 ton capacity.



IC 700299. COVERED HOPPER.



IC X616 DIESEL SAND CAR. Former A616 auxiliary tender.



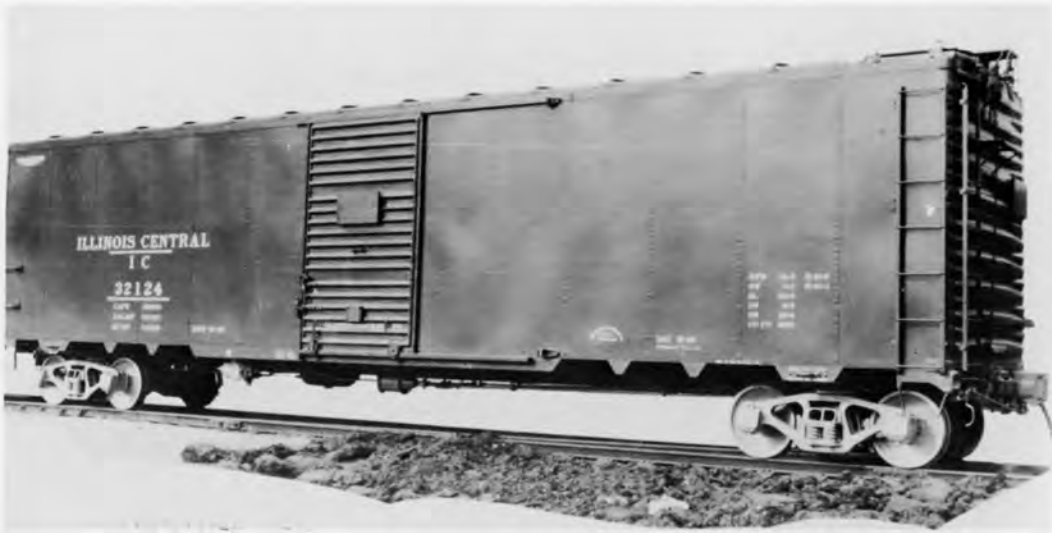
IC 29110 BOXCAR 40FT. PHOTO BY M.D. McCARTER. The 29000-29499 series cars were built by the IC Centralia, IL car shop in 1946.



IC 171500 WOODSIDE BOXCAR. PHOTO BY ACF - ICHS COLLECTION.



IC 33682 BOXCAR 50 FT SD. PHOTO BY ACF - ICHS COLLECTION. The 33500-33999 series cars were built by ACF in 1941 at their St. Louis, MO plant. Cars assigned to auto parts service.



IC 32124 BOXCAR 50FT SD. PHOTO BY ACF - ICHS COLLECTION. The 32000-32499 series cars were built by ACF in 1940 at their St. Louis, MO plant.



IC 12191 BOXCAR 50FT. PHOTO ICRR - ICHS COLLECTION. This car is part of the 12100 to 12622 series built by Pullman Standard in 1967. The cars are equipped with nailable steel floors, 4 SL-2 belt rails and loading strap anchors at the doorways.



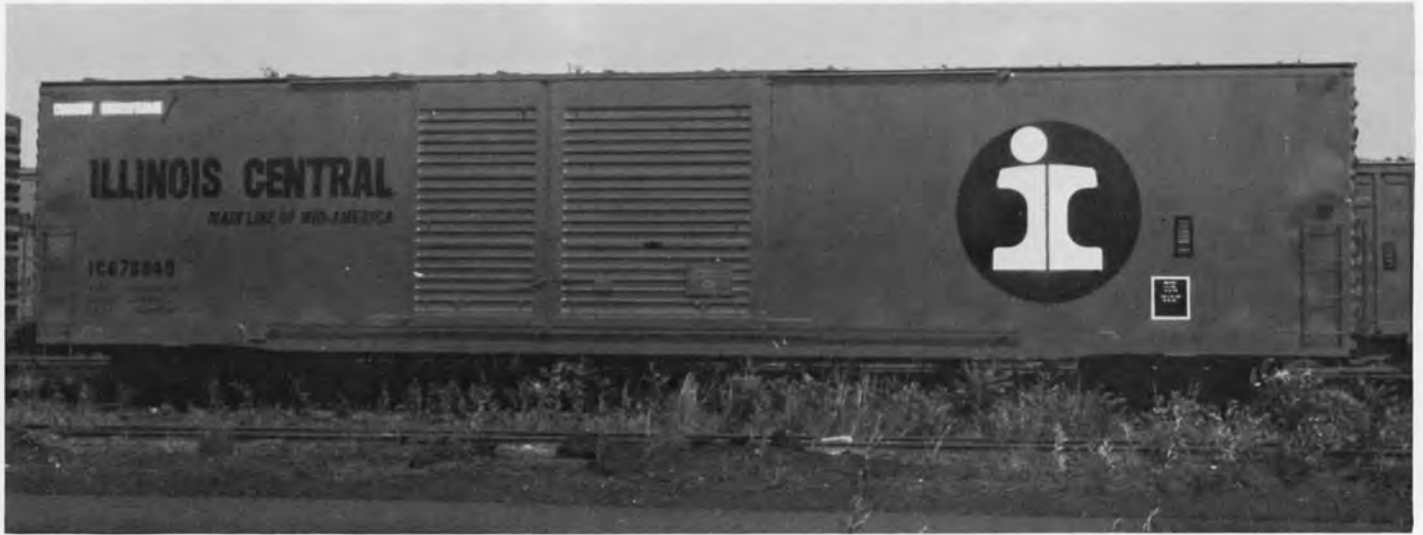
IC 37526 BOXCAR 50FT. PHOTO ICRR - ICHS COLLECTION. This car is part of the 37500-37699 series built by Pullman Standard in 1967 and equipped with combination doors and 2³/₈" Durawood floor decking.



IC 11203. 50 FT BOXCAR. 11000-11299. ICRR 1967. 70 ton capacity.



IC X90. STEAM WRECKER.



IC 670049 BOXCAR 60FT. PHOTO IC CENTRALIA SHOP EMPLOYEES - ICHS COLLECTION. This car is part of the 670036 to 670075 series built by the IC Centralia, IL car shop in 1972. Assigned to auto parts service.



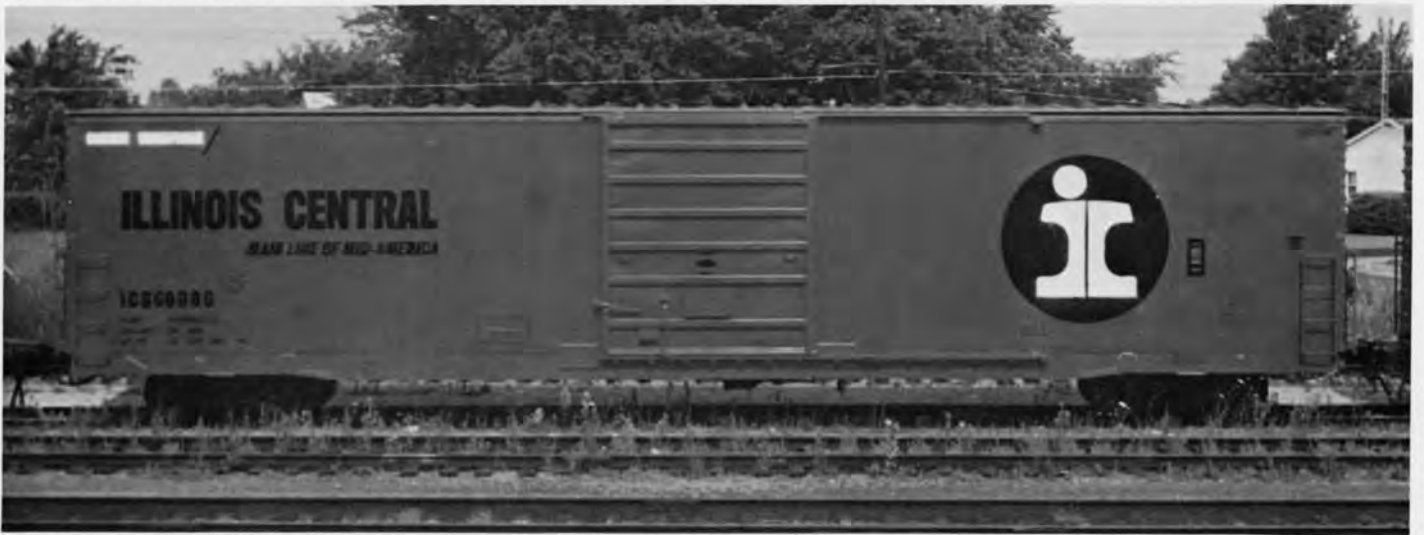
IC 11527 BOXCAR 50FT. PHOTO IC CENTRALIA SHOP EMPLOYEES - ICHS COLLECTION. 11500 to 11799 series built by the IC Centralia, IL car shop in 1967. Cars are equipped with DF-2 load devices.



IC 13597 BOXCAR 50 FT. PHOTO IC CENTRALIA SHOP EMPLOYEES - ICHS COLLECTION. 13400 to 13599 series cars built by the IC Centralia, IL car shop in 1969. Cars equipped with Belt DF-2 load devices and equipped with nailable steel floors.



IC 11116 BOXCAR 50FT. PHOTO ICRR CENTRALIA SHOP EMPLOYEES - ICHS COLLECTION. 11000 to 11299 series cars built by the IC Centralia, IL car shop in 1967. Cars equipped with 9 belt DF-2 Evans load devices.



IC 66006 BOXCAR 60FT. PHOTO ICRR CENTRALIA SHOP EMPLOYEES - ICHS COLLECTION. The 660001 to 660025 series cars were built by the IC Centralia, IL car shop in 1970. Equipped with cushion underframe and 22 belt DF-1 load devices.



IC 13297 BOXCAR 50FT. PHOTO ICRR CENTRALIA SHOP EMPLOYEES - ICHS COLLECTION. The 13100-13399 series cars were built by the IC Centralia, IL car shop in 1969. Cars equipped with lading strap anchors and 4 belt DF-2 load devices.



IC 580000 BOXCAR 50FT. PHOTO ICRR CENTRALIA SHOP EMPLOYEES - ICHS COLLECTION. 580000-580399 series cars built by the IC Centralia, IL car shop in 1970. Cars equipped with 4 belt DF-2 load devices and lading strap anchors. 70 ton capy car.



IC 25697 BOXCAR 50FT. PHOTO BY BRUCE MEYER. The 25000-25899 series cars were built by the IC Centralia, IL car shop in 1956.



IC 360146 WOOD BOXCAR. PHOTO BY ICRR - ICHS COLLECTION. Assigned to auto & furniture service.



IC 43974 HI-CUBE BOXCAR 86FT. PHOTO BY ICRR - ICHS COLLECTION. The 43970-43999 series cars were built by Thrall in 1964. Cars are equipped with movable bulkheads and DF-2 belt rails. The cars were assigned to the GTW RR for loading at Flint, Michigan for auto parts service.



IC 49876 BOXCAR 50FT. PHOTO BY BRUCE MEYER. The 49770-49899 series cars were built by the IC Centralia, IL car shop in 1963. The cars were insulated, equipped with 2 $\frac{3}{8}$ " Doweloc wood flooring and Evans load dividers.



IC 42236 BOXCAR 50FT. PHOTO BY ICRR - ICHS COLLECTION. The 41800-42549 series cars were built by the IC Centralia, IL car shop in 1961. The cars were equipped with 2 $\frac{1}{4}$ " wood flooring and assigned to auto parts service.



IC 44207 BOXCAR. PHOTO BY JAY WILLIAMS. The 44000-44281 series cars were built by G.A.T. in 1937 as 161501-161700 series cars. They were rebuilt in 1950 by the IC Centralia, IL car shop and renumbered into the 44000 series.



IC 43703 BOXCAR 60FT. PHOTO BY ICRR - DAVID DAISY COLLECTION. The 43700-43749 series cars were built by Thrall in 1963. Cars are equipped with 1/4" nailable steel flooring. Assigned to GTW RR for loading auto axles at Pontiac's Flint, Michigan auto plant.



IC 37123 BOXCAR. PHOTO BY G.V. CARSON - DAVID DAISY COLLECTION. The 37000-37499 series cars were built by Mt. Vernon Car Co. in Mt. Vernon, IL in 1940. Cars were equipped with Evans auto loaders that were applied in 1945 and then removed in 1954.



IC 10064 BOXCAR 50FT. PHOTO BY BRUCE MEYER. The 10000-10199 series cars were built by the IC Centralia, IL car shop in 1964. The cars are 70 ton capy equipped with nailable steel floors and 3 DF-2 partial belts load devices.



IC 39548 BOXCAR 60FT. PHOTO BY ICRR - ICHS COLLECTION. The 39536-39599 series cars were built by the IC Centralia, IL car shop in 1966. The 70 ton capy cars are specially equipped to handle Chevrolet auto parts.



IC 57987 REEFER. PHOTO BY ACF - ICHS COLLECTION. Built by ACF in 1915.



IC 53190 REEFER. PHOTO BY ACF - ICHS COLLECTION. The 53001-54000 series cars were built by ACF in 1916 at the Chicago, IL plant. The cars were 40 ton capy with fixed end ice boxes and steel underframes.



IC 58321 REEFER. PHOTO BY ACF - ICHS COLLECTION. The 58001-58900 series cars were built by ACF in 1915 at the Chicago, IL plant. The cars were 40 ton capy with fixed end ice boxes and steel underframes.



MDT 13550 REEFER. PHOTO BY W.C. THURMAN - ICHS COLLECTION. IC leased large numbers of reefers from MDT over the years.



NRC 16738 REEFER. PHOTO BY ICRR - ICHS COLLECTION. This car was assigned to IC for loading at New Orleans, LA which was the main loading point for fruit shipments coming from South & Central America.



NRC 16470 REEFER. PHOTO BY W.C. THURMAN - ICHS COLLECTION. IC leased large numbers of reefers from NRC over the years.



IC 50403 REEFER. PHOTO BY BRUCE MEYER - ICHS COLLECTION. The 50300-50499 series cars were built by GATX in E. Chicago, IN in 1941 & 1942 for the IC. Cars at random were removed from general reefer service and repainted into solid boxcar brown body and assigned to ice service only.



IC 4707 REEFER. PHOTO BY G.V. CARSON - ICHS COLLECTION. Steel frame express reefer with plywood sides and ends.



IC 83518 HOPPER. PHOTO BY ICRR - ICHS COLLECTION. The 83500-83599 series cars were built by the IC Centralia car shop in 1969. The 70 ton copy cars were assigned to wood chip loading only.



IC 80306 HOPPER. PHOTO BY ICRR - ICHS COLLECTION. The 80300-80499 series cars were built by the IC Centralia car shop in 1967. The 70 ton copy cars were assigned to wood chip loading only.



IC 78008 HOPPER. PHOTO ICRR - ICHS COLLECTION. The 78000-78999 series cars were built by the IC Centralia car shop in 1968. They were the first 100 ton copy hoppers owned by the IC.



IC 78113 HOPPER. PHOTO ICRR - ICHS COLLECTION.



IC 70195 HOPPER. PHOTO ACF - ICHS COLLECTION. The 70000-70499 series cars built by ACF in 1948 in St. Louis, MO. The 50 ton copy cars were assigned mainly to coal service in Southern Illinois and Kentucky.



IC 210542 HOPPER. PHOTO ACF - ICHS COLLECTION. Built by ACF in 1919.



IC 78019 HOPPER. PHOTO G.V. CARSON - ICHS COLLECTION. The 77000-78965 series cars were rebuilt by the IC in 1946 & 1947 from former 90000-93970 hoppers built in 1921.



IC 75421 HOPPER. PHOTO ICRR - ICHS COLLECTION. The 75000-76999 series 50 ton capy cars were rebuilt by the IC in 1945. From former 90000-93970 hoppers built in 1921.



IC 76255 HOPPER. PHOTO JAY WILLIAMS - ICHS COLLECTION. The 76000-76999 series 70 ton cars were built by the IC Centralia, IL car shop in 1963. These hoppers were the second of three orders built of the 75000-77999 hoppers the IC built between 1962 & 1964.



IC 66618 HOPPER. PHOTO HEDRICH-BLESSING (ICRR) - ICHS COLLECTION. The 65300-66699 series cars were built by the IC Centralia, IL car shop. The 70 ton hoppers were the second of three orders for hoppers in the 65000-67999 series.



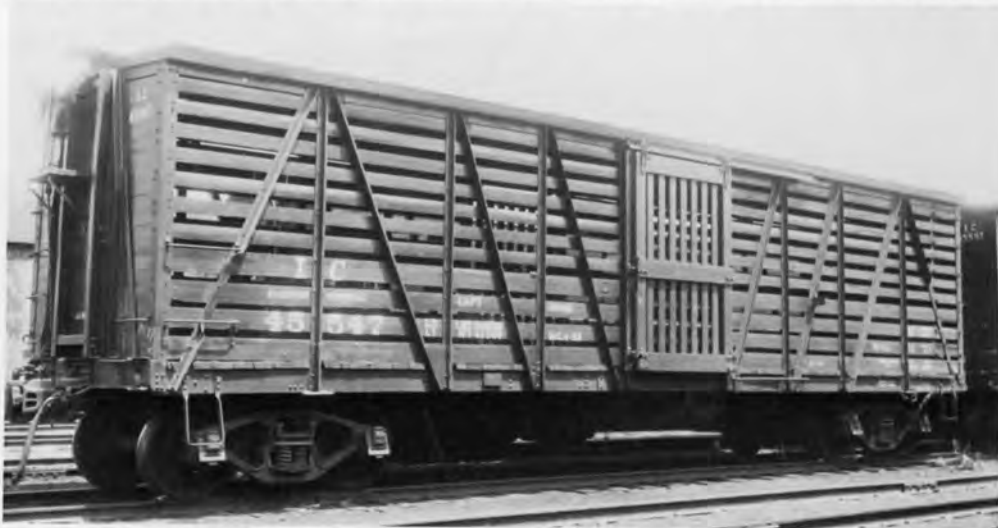
IC 73826 HOPPER. PHOTO BRUCE MEYER - ICHS COLLECTION. The 73600-73999 series cars built by G.A.T. Corporation.



IC 83399 HOPPER. PHOTO ICRR - DAVID J. DAISY COLLECTION. The 82235-83499 series cars were built by the IC Centralia, IL car shop in 1960 & 1961. 70 ton capy.



IC 46086 STOCK CAR. PHOTO BY BRUCE MEYER - ICHS COLLECTION. The 46000-46199 were built by General American Car Co. in 1925 & 1926 as 31001-31200 cars. Rebuilt by IC McComb car shops in 1952 and renumbered to 46000-46199 series.



IC 45547 STOCK CAR. PHOTO BY G.V. CARSON - ICHS COLLECTION. The 45500-45799 series cars were built by ACF in 1921 and originally numbered 30501-30800. Rebuilt by IC McComb, MS car shops in 1953 and renumbered to the 45500-45799 series.



IC 31502 STOCK. PHOTO BY ACF - ICHS COLLECTION. Built by ACF in 1916.



IC 30617 STOCK. PHOTO BY ACF - ICHS COLLECTION. The 30501-30800 series cars were built by ACF in 1921.



IC 30387 STOCK. PHOTO BY ACF - ICHS COLLECTION. Built by ACF in 1913.



IC 99889 COVERED GONDOLA. PHOTO BY ICRR - ICHS COLLECTION. The 99800-99894 series cars were built by the IC Centralia, IL car shop in 1964 & 1965. The cars are 70 ton capy equipped with a three section diag. panel removable roof, four movable bulkheads and belt rails on the sides.



IC 97946 MILL GONDOLA. PHOTO BY ICRR - ICHS COLLECTION. The 97900-97999 series mill gondolas were built by Bethlehem in 1967. The cars are 100 ton capy equipped with dreadnaught drop end doors, continuous lading band anchor on top rail of sides and 12 4x4 timber post on the inside side walls (6 per side).



IC 97345 COVERED GONDOLA. PHOTO BY ICRR - ICHS COLLECTION. The 97300-97349 series covered gondolas were built by Greenville in 1967 for steel service in Chicago area. The cars are of 100 ton capy and are equipped with a three section removable roof.



IC 96783 GONDOLA. PHOTO BY BRUCE MEYER - ICHS COLLECTION. The 96000-96929 series 41 ft, 50 ton solid bottom general service gondolas were rebuilt by the IC Centralia, IL and McComb, MS car shops in 1967 from the former 94000-95499 series drop bottom equipped cars.



IC 97328 GONDOLA. PHOTO BY BRUCE MEYER - ICHS COLLECTION. The 97300-97349 series 100 ton, 52 ft covered gondolas were built by Greenville in 1967. The cars were equipped with three section removable roofs and assigned to steel service in the Chicago area for loading.



IC 96823 GONDOLA. PHOTO BY ICRR - ICHS COLLECTION. The 96000-96929 series 41 ft, 50 ton solid bottom general service gondolas were rebuilt by the IC Centralia, IL and McComb, MS car shops in 1967 & 1968 from the former 94000-95499 series drop bottom equipped cars.



IC 97250 LOW SIDE GONDOLA. PHOTO BY ICRR - ICHS COLLECTION. 97250-97251 were 70 ton, 41 ft solid bottom gondolas converted by the IC Centralia car shop in 1950 from 203700-205839 series gondolas built in 1923. 97250 & 97251 were rebuilt for carrying LCL containers for lime & cement. The cars were equipped to carry 10 containers of 145 cuft capy per car.



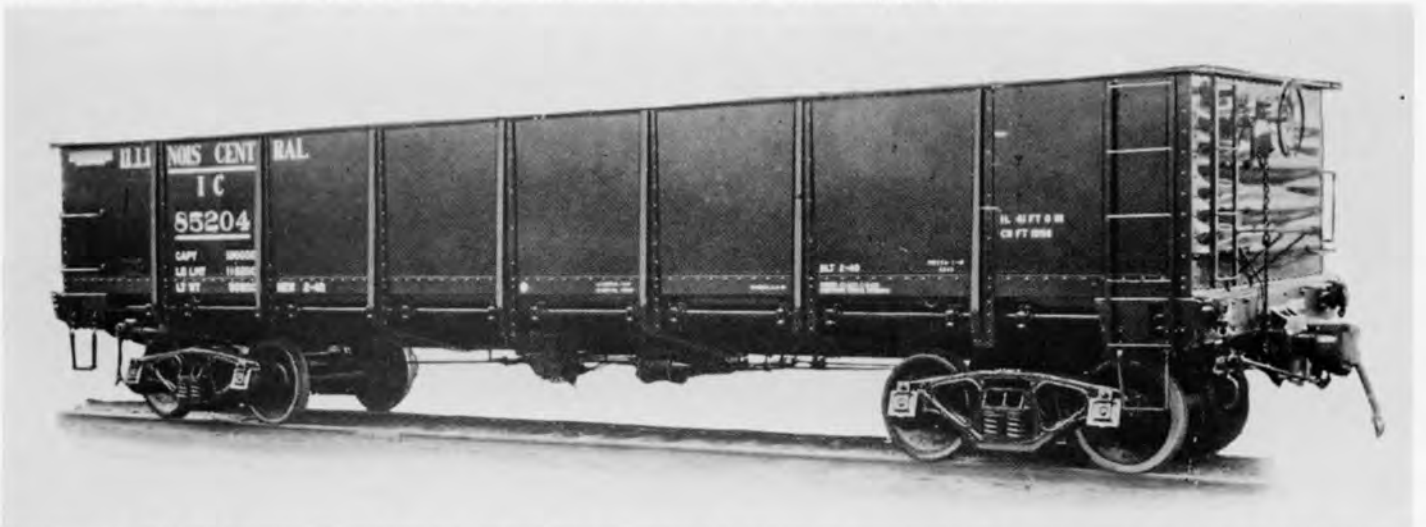
IC 125594 GONDOLA. PHOTO ACF - ICHS COLLECTION. Built in 1915 by ACF. Equipped with side dump.



IC 120295 GONDOLA. PHOTO ACF - ICHS COLLECTION. Built in 1912 by ACF.



IC 129230 GONDOLA. PHOTO ACF - ICHS COLLECTION. Built by ACF in 1922 and equipped with steel drop ends and solid bottoms. Cars were renumbered to 97000-97248 series in 1940 during a rebuilding program.



IC 85204 GONDOLA. PHOTO M.D. McCARTER - ICHS COLLECTION. The 85000-85749 series cars built by G.A.T.X. in 1940. The cars were 50 ton capy, 41 ft cars with 16 drop bottom doors.



IC 94100 GONDOLA. PHOTO ICRR - DAVID J. DAISY COLLECTION. The 94000-95499 series cars were built by the IC Centralia, IL car shop in 1953. The cars are 50 ton capy and equipped with drop bottoms. Cars were converted to solid bottoms in the 1960s.



IC 900 FLAT CAR. PHOTO ICRR - ICHS COLLECTION. IC Flex-van flat cars were used for carrying U.S. Mail vans. The flats were equipped with steam & signal lines for use in passenger service or freight service.



IC 60364 FLAT. PHOTO ICRR - ICHS COLLECTION. The 60300-60470 series cars were built by Bethlehem Steel Co. in 1963. The 50 ton capy bulkhead flats were assigned to wallboard loading.



RICZ 290029



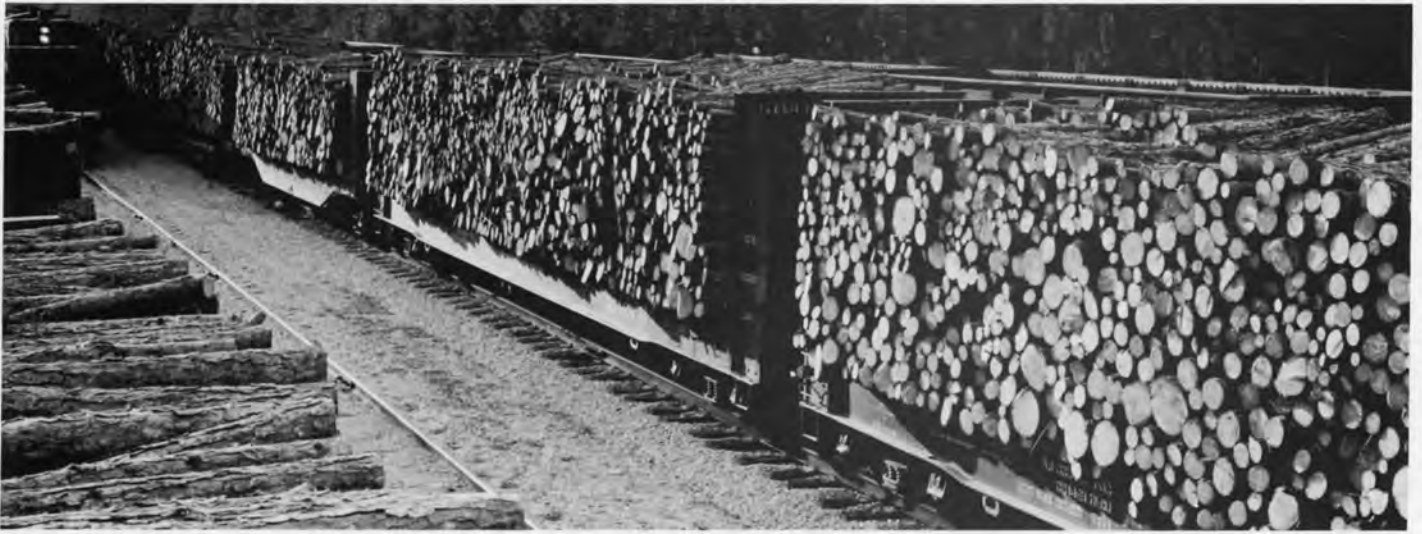
IC 62489 FLAT. PHOTO BY ICRR - ICHS COLLECTION. #62489 was built by the IC Centralia, IL car shop in 1957, 125 ton capy, 57 ft depressed center flat car. The cast underframe was built by General Steel Casting in East St. Louis, IL. Car equipped with cast steel loading floor and end of car cushion devices.



IC 62499 FLAT. PHOTO BY ICRR - ICHS COLLECTION. #62499 was built by the IC Centralia, IL car shop in 1953. The 125 ton, 53 ft flat car is equipped with a cast underframe and 3" oak wood deck. The underframe was cast by General Steel.



IC 62635 FLAT CAR. PHOTO BY ICRR - ICHS COLLECTION. The 62625-62674 series cars were built by the IC in 1962. The 70 ton capy cars are equipped with cast steel underframe built by General Steel Casting Co.



IC 63476 PULP FLAT. PHOTO HEDRICH-BLESSING (ICRR) - ICHS COLLECTION. The 63300-63699 series cars were built by the IC Centralia, IL car shop in 1964. The cars are 70 ton capy assigned to pulpwood loading only.



IC 7815 FLAT. PHOTO ICRR - ICHS COLLECTION. The 7800-7837 series cars were built by the IC Centralia, IL car shop in 1963. The 50 ton, 38 ft flat cars were assigned to pulpwood loading. The underframe and end bulkhead are cast steel by General Steel Casting Co.



IC 1951 FLAT. PHOTO BY IC CENTRALIA CAR SHOP EMPLOYEES - ICHS COLLECTION. The 1000-1999 series cars were built in 1967 by the IC. The cars are 50 ft long with 70 ton capy. Cars are assigned to pulpwood loading.



IC 97298 COIL CAR. PHOTO BY HEDRICH-BLESSING (ICRR) - ICHS COLLECTION. The 97275-97299 series cars were built in 1967 by Evans. The 100 ton capy, 48 ft. coil steel cars assigned to the Chicago area were for coil steel loading only. The cars are equipped with six movable x-members load devices.



ILL. CENTRAL SYS. 11-41 MAID
 100-50 TON 53'-6" STEEL
 UNDERFRAME FLAT CARS
 A. C. & F. CO. LIT 2216
 NEG. NO. 1510319-13

IC 62519 FLAT. PHOTO BY ACF - ICHS COLLECTION. The 62500-62599 series cars were built by ACF in 1941. The cars are 50 ton capy and 53 ft long. Assigned to general service.



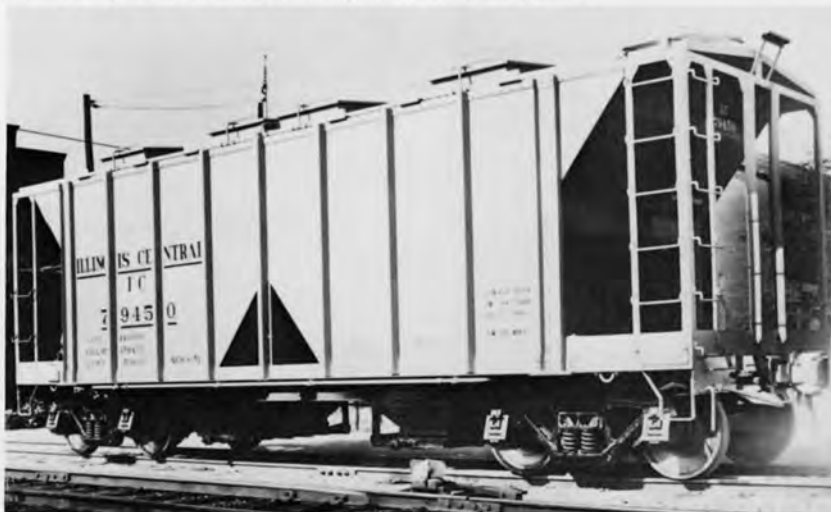
IC 60001 FLAT. PHOTO ICRR CENTRALIA CAR SHOP EMPLOYEES - DAVID DAISY COLLECTION. 21 cars at random from the 60000-60099 series of flat cars were equipped with 9 ft bulkheads for wallboard service. The other cars are 60018/60020/60022/24/26/29/42/51/54/56/61/65/66/81/86/87/88/91/92/93.



IC 56315 COVERED HOPPER. PHOTO BY ICRR - ICHS COLLECTION. The 56300-56799 series of covered hoppers were built by G.A.T.X. in 1966 & 1967 at E. Chicago, IN. The cars are 100 ton capy with 4700 cu ft capy. The cars are equipped with a 3 piece 44 ft hatch. These cars are assigned mainly to grain service.



IC 55257 COVERED HOPPER PHOTO BY ACF - ICHS COLLECTION. The 55200-55299 series cars were built by ACF in 1958 with 70 ton capy. Large numbers of these cars were assigned to cement service.



IC 79450 COVERED HOPPER PHOTO BY ACF - ICHS COLLECTION. The 79400-79499 series cars were built by ACF in 1951 with a 70 ton capy.



IC 79241 COVERED HOPPER PHOTO BY ACF - ICHS COLLECTION. The 79200-79299 series cars were built by ACF in 1954 with 70 ton capy.



IC 54000 COVERED HOPPER PHOTO BY ACF - ICHS COLLECTION. The 54000-54099 series cars were built by ACF in 1958.



IC 54163 COVERED HOPPER PHOTO BY ACF - ICHS COLLECTION. The 54150-54249 series cars were built by ACF in 1960 with 70 ton capy, most were assigned to cement service.



IC X1366. 40 FT MW BOXCAR.



IC 43874. 60FT SD BOXCAR. 43800-43906. Thrall 1965. 70 ton capacity.



IC 150059. 50 FT. DD BOXCAR. 150025-150079. USRE 1972. 70 ton capacity.



IC 11480. 50FT BOXCAR. 11300-11499. ACF 1967. 70 ton capacity.



IC 57176. COVERED HOPPER. 56500-57199. Pullman Standard 1969.



IC 55345. COVERED HOPPER. 55300-55499. Pullman Standard 1965. 70 ton capacity.



IC 54191. COVERED HOPPER. 54150-54299. ACF 1960. 70 ton capacity.



IC 9804. CABOOSE. 9800-9899. ICRR 1941.



IC 79304 COVERED HOPPER PHOTO BY ICRR - ICHS COLLECTION. The 79300-79311 series cars were built by Pullman Standard in 1953 with 70 ton capy.



IC 79191 COVERED HOPPER PHOTO ALVINE DOYLE JR. ASSOCIATES, INC. - COLLECTION OF ELLIOT PARKMAN. The 79100-79199 series cars were 70 ton capy built by Pullman Standard in 1955 and were used for cement loading.



IC 59089 COVERED HOPPER PHOTO ICRR - HEDRICH-BLESSING - COLLECTION OF ICHS. The 59085-59096 series of cars were built in 1960 by G.A.T.X. and were part of the 59010-59196 single bay airslide covered hoppers owned by the IC. Cars were assigned to flour, sugar and dry chemical service.



IC 56105 COVERED HOPPER PHOTO ICRR - ICHS COLLECTION. The 56000-56299 series cars were built by the IC Centralia, IL car shop in 1966.



IC 56231 COVERED HOPPER PHOTO ICRR - ICHS COLLECTION. The 56000-56299 series cars were built by the IC Centralia, IL car shop in 1966.



IC 8017 TRANSFER CABOOSE. PHOTO BY DENNIS CONNIFF - DAVID J. DAISY COLLECTION. The 8000-8020 cabooses were rebuilt by the IC in 1948 from former 10000-13958 wood side boxcars. The wood sides on the cabooses were replaced by steel sides starting in the 1960s.



IC 9999 ROAD CABOOSE. PHOTO BY DENNIS CONNIFF - DAVID J. DAISY COLLECTION. The 9950-9999 series cabooses were built by the IC in 1951. This caboose type was the IC standard design until replaced by the wide vision caboose design in 1966. These cabooses were used in all types of service all over the IC.



IC 99187 WOOD CABOOSE. PHOTO BY ACF - ICHS COLLECTION. The 99181-99200 series cabooses were built by ACF in 1923. They were later renumbered by the IC to 9181-9200.



IC 99381 WOOD CABOOSE. PHOTO BY ACF - ICHS COLLECTION. The 99376-99405 series cabooses were built by ACF in 1926. Later renumbered to 9376-9405 series.



IC 8047 TERMINAL CABOOSE. PHOTO BY JAY WILLIAMS.



IC 9258 WOOD CABOOSE. PHOTO BY DENNIS CONNIFF. The 9251-9265 series were built by ACF in 1923 and originally numbered 99251-99265.



IC 9709 CABOOSE. PHOTO BY JAY WILLIAMS. The 9701-9799 series cabooses were built by the IC Centralia, IL car shop in 1940.



IC 9701 CABOOSE. PHOTO BY JAY WILLIAMS. The 9701-9799 series cabooses were built by the IC Centralia, IL car shop in 1940.



IC X8125 TANK CAR. PHOTO BY G.V. CARSON - ICHS COLLECTION. The X8125-X8129 series tank cars were built by ACF in 1905 for the IC and originally numbered 1-5.



IC X5174 BALLAST CAR. PHOTO G.V. CARSON - ICHS COLLECTION. The X5100-X5299 series 50 ton ballast cars were built by ACF in 1923 and were originally numbered 113401-113900.



IC X1174 BUNK CAR. PHOTO G.V. CARSON - ICHS COLLECTION. Former wood side boxcar that the IC converted to a bunk car.



IC X8054 SNOW PLOW. PHOTO G.V. CARSON - ICHS COLLECTION. Part of a group of snow plows that the IC assigned to the northern half of Illinois and the Iowa Division. Converted by the IC from former flat cars, all were built to the same design. Most were equipped with headlights off retired steam engines.



IC X4986 LOW SIDE GONDOLA. G.V. CARSON - ICHS COLLECTION. Rebuilt low side gondola assigned to scrap service for the MW depot between Markham Yard (Chicago) and Kankakee, IL.



IC X629 SAND CAR. PHOTO BY BRUCE MEYER. Former IC water car. These cars were built by the IC and rebuilt by the Paducah, KY locomotive shop for diesel sand service, diesel fuel service or a combination of both.



IC X8010 SNOW PLOW. PHOTO COLLECTION OF T.S. MARTORANO



IC X3874 WHEEL CAR. PHOTO BY G.V. CARSON



IC X3560 & X98. PHOTO BY J.M. GRUBER IN 1938 - ICHS COLLECTION.
Comb. truck & boom car with wrecker.



IC X97 WRECKER. PHOTO COLLECTION OF DAVID J. DAISY.
X97 was assigned to Carbondale, IL during the 1950s and 1960s.



IC X17 STEAM PILE DRIVER. PHOTO BY WILLIAM A. RAIA. *Shown during bridge rebuilding at Riverdale, IL in November, 1970. Retired from roster in 1990.*

This Special Issue of the GREEN DIAMOND was prepared jointly by the editors of the GREEN DIAMOND and FREIGHT CARS JOURNAL. FREIGHT CARS JOURNAL is the magazine published by the Society of Freight Car Historians.

If you are interested in freight cars you might want to consider membership in this organization. They cover strictly freight cars, but from different eras and occasionally, as with this issue, one particular railroad. Back Issues of Freight Cars Journal are also available, as well as a series of softcover monographs on various subjects. Contact FREIGHT CARS JOURNAL at the address below for a price list.

One back Issue that IC or ICG fans might find of interest is FREIGHT CARS JOURNAL #31 which traces six main painting styles on IC - ICG - IC boxcars between the 1960's and 1989. The issue includes 7 color shots of IC 50'

boxcars and five b&w photos and an explanation of each of the different styles.

Also in issue #31 is a ten page article on Flexi-vans on the Milwaukee Road. Although the IC is not mentioned in the article, the flexi-vans were used on IC passenger trains and a number of modelers have asked for more information on flexi-vans and IC passenger piggyback operations. An article on these unique cars and their service on the IC is being planned. If anyone can help with personal recollections, photos, or other information, please contact the GREEN DIAMOND editor.

The address for more information from FREIGHT CARS JOURNAL is:

FREIGHT CARS JOURNAL
P.O. BOX 2480
MONROVIA CA 91017

The following dealers carry the GREEN DIAMOND and other ICHS items. Please mention that you saw them listed in the GREEN DIAMOND when you visit their store.

Scale Models Ltd.
Pacesetter Park Plaza
1048 E. 162nd. St. (Rt.6)
South Holland IL 60473

The Right Track
1015 W. Jackson Street
Sullivan IL 61951-9231

Model Railroad & Hobby Shop
3436 Park Ave.
Memphis TN 38111

The Right Track
6521 W. 127th Street
Palos Heights IL 60463

The Owl's Roost
Model Railroad Shop
342 S. Washington Ave.
Kankakee IL 60901

The Trainmaster
of Montgomery
3641 Debby Drive
Montgomery AL 36111

Des Plaines Hobbies
1464 Lee Street
Des Plaines IL 60018

Don's Hobby World
18447 S. Halsted
Glenwood IL 60425

Hobby Corner
1534 North First Ave.
Laurel MS 39440

End of Track Hobbies
9706 Franklin Ave.
Franklin Park IL 60131

Park Lane Hobbies
15415 Cottage Grove Ave.
Dolton IL 60419-2798

Pro Custom Hobbies
721 Frederick Road
Catonsville MD 21228

Hill's Hobby &
Collectors' Shop
32-34 Main Street
Park Ridge IL 60068

WANTED

Les's Bicycle & Hobby Center
900 La Porte Road
Waterloo IA 50702

Al's Hobby Shop
121 Addison
Elmhurst IL 60126

Information and photos of Illinois Central side door cabooses. What railroads purchased IC side door cabooses. Information showing painting and lettering schemes would be appreciated. An HO model is being produced and paint schemes are needed. Ted Richardson, 431 Briar Place, Libertyville IL 60048.

The Whistlepost
2347 West Monroe
Springfield IL 62704

Ron's Mundelien Hobbies
431 N. Lake Street
Mundelien IL 60060

Hammers Hobbies
1959 E. Pershing Road
Decatur IL 62521

Chicagoland Hobby
6017 Northwest Highway
Chicago IL 60631



PURINA
SHOWS

ILLINOIS CENTRAL
I C
5400
CAPY 140000 LG
LC LMT 152500
LT WT 61500 JY6-63